

# Syllabus 2024-2025 Semester II

## Thesis Hub The Hague Southwest

---

**Leiden-Delft-Erasmus Universities:** Governance of Migration and Diversity

**Contacts:**

Mandy Koenraads, E: [m.r.koenraads@fgga.leidenuniv.nl](mailto:m.r.koenraads@fgga.leidenuniv.nl)

Ilse Rink, E: [i.rink@bb.leidenuniv.nl](mailto:i.rink@bb.leidenuniv.nl)



The [Thesis Hub The Hague Southwest](#) is an educational platform where various students from Leiden University, TU Delft and Erasmus Rotterdam conduct (thesis) research from different disciplines. The research is linked to practice-oriented challenges provided by various stakeholders in The Hague Southwest. Think of the municipality of The Hague, local neighborhood professionals and residents. In this document you will find all important information about the expectations of students participating in the thesis hub and important dates to note when participating.

# Table of contents

Process and expectations	2
What does the thesis process look like?	2
Six mandatory components	3
Timeline 2024 - 2025	6
Free parts	6
Pandje H - with Heart and Head in Moerwijk	8
Practical challenges Municipality of The Hague   Policy staff	9
Urban Development Department - Economy	9
Department of Education, Culture and Science	9
Directorate of Security / District Management	10
Service Participation	10
Department of Social Affairs and Employment	10
The Hague Southwest   Projects & Residents	11
The Hague Southwest	11
Housing associations (Staedion/Haagwonen)	11
Moerwijk	11
Morgenstond	12
Bouwlust/Vrederust	12
Privacy and data sharing	14
Exchange of personal data of contacts by students	14
Exchange of personal data within The Hague Southwest Thesis Hub	16
Data sharing on LDE GMD website	16
Background information	18
Why is the Thesis Hub Hague Southwest needed?	18
University partnership	18
Sources for more context information on Hague Southwest	20
Agreement Duty of Effort	21



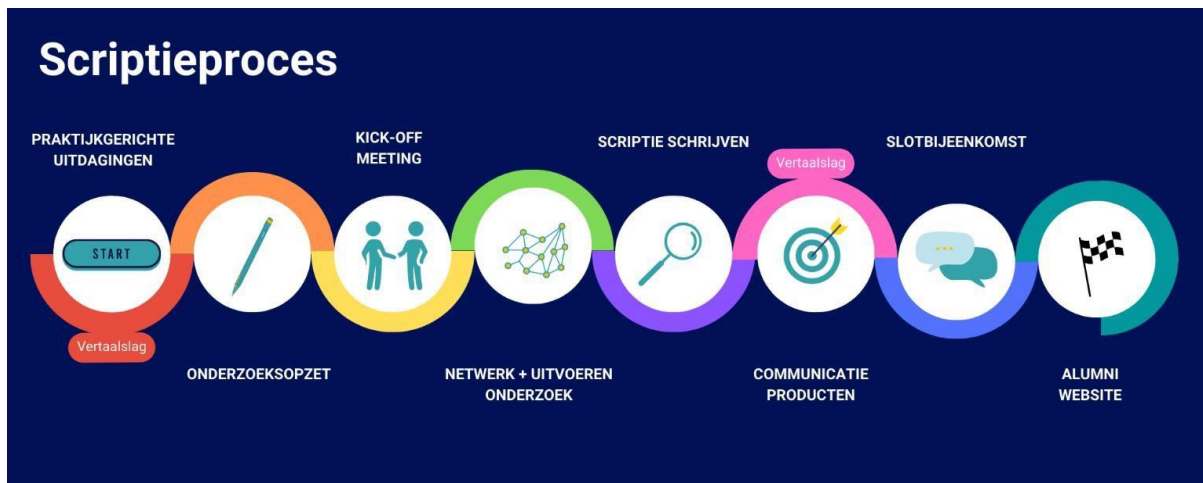
## Process and expectations

### What does the thesis process look like?

Unlike many other undergraduate and graduate theses, the starting point of your research design is the list of practice-based challenges (see Appendix). You choose one of the challenges in the list to use as the starting point for the research question of your thesis. The formulated challenges in the list are very practice-oriented. Your task is to translate them into a good research question. This is where the translation from practice to research takes place. Your supervisor can provide direction in this regard. The first weeks you write a research design like any other student. However, what is different is that you present this during our kick-off meeting to relevant stakeholders such as policy staff of the municipality of The Hague, project leaders and key figures in The Hague Southwest. This part of the thesis hub The Hague Southwest is mandatory. It is a great starting point to make contacts for your data collection and get feedback on your research proposal from the stakeholders.

You then conduct your thesis research independently under the guidance of your own supervisor. Interim, three mandatory workshops in which you will participate are: Ethical Research Workshop, Creative Research Methods Workshop and the Science Communication Workshop. Furthermore, additional (non-committal!) contact moments are scheduled with other students affiliated with the thesis hub. After writing and completing your

thesis, it is expected that you translate (some) of your research findings concretely into a communication product and a short pitch.



At the final meeting, these are discussed with relevant stakeholders through a world café format. This is an opportunity to give back to the stakeholders of The Hague Southwest and engage with them about your research findings. The final meeting, pitch and communication product are mandatory parts of the thesis hub. This is where the translation from research to policy is ensured. See the image on the next page for the entire process.

**Important:** all mandatory components and deadlines surrounding your thesis from your own program also remain in place. At the thesis hub THSW we work closely with our stakeholders, however, they know that students do not have a result obligation. What we do oblige is a certain obligation of effort, which is why a first point of contact is also followed by signing an agreement - see the last page of this document. All elements of the Thesis Hub The Hague Southwest are explained separately below in terms of purpose and design.

## Six mandatory components

Event	Ethics workshop
Goal	What does it mean to do ethical research? We want to create awareness in every student of the accountability they have when conducting research; both qualitative and quantitative research methods. This includes such components as privacy policies, data storage, sensitive topics and giving back to your participants covered in the workshop. This workshop will be taught by Dr. Rodrigo Mena Fluhmann and Dr. Nanneke Winters of the Institute of Social Science (ISS).

Setup	Interactive presentation + space to brainstorm around your own research on ethical issues
Date/time	February 18th, 2025, 10:00 – 13:00
Location	T.b.d.

<b>Event</b>	<b>Kick-off meeting</b>
Goal	An initial contact/networking event between all relevant stakeholders during which the students' research proposals are discussed in terms of content. This contact event ensures the social relevance and correct fit of the research proposal on the one hand, and gives the student the opportunity to getting the right contacts for his/her research on the other hand.
Setup	Short presentation (max. 5 min) by students followed by a Q&A
Date/time	March 31 <sup>st</sup> , 2025, 10:00-17:00
Location	T.b.d.
Deadlines	Delivery of PP slides one week in advance

<b>Event</b>	<b>Method Café Workshop</b>
Goal	Encouraging students to use research methods other than surveys and semi-structured interviews for her/his thesis. Which methods work best for your target audience? You will interact with several experts who will share their experiences. Research methods such as photo-voice, art-based workshops, focus groups et cetera will be offered.
Setup	Short workshops by research method + space to brainstorm on applying the methods in your own research
Date/time	February 26 <sup>th</sup> , 2025, 9:00-12:00
Location	T.b.d.

<b>Event</b>	<b>Science Communication Workshop</b>
--------------	---------------------------------------

Goal	Conceptualizing (part of) your research results into a communication product for a target group other than academics. For example, how would you present your research results to your participants and residents in The Hague Southwest? We will discuss, among other things, the purpose, audience, format and message of communication purposes. The workshop is partly given by an employee of Leiden University, Science Communication and Society. In addition, a policy officer joins to highlight the practical side of policy notes.
Setup	Interactive presentation with room for brainstorming on communication products for your own research.
Date/time	May 19 <sup>th</sup> , 2025, 10:00-13:00
Location	T.b.d.

Section	Communication product
Goal	Making the concrete translation from research to practice. After conducting your research and writing the thesis, the student makes the translation from science to another audience by creating a communication product. The student may choose what kind of product (such as a podcast, video, blog, infographic, policy brief et cetera) as long as the target audience is <u>not</u> academics. How would you present your research findings to your stakeholders in The Hague Southwest?  <i>*The communication product will be on our website.</i>
Deadline	Two weeks before the final meeting.

Event	Final Meeting
Goal	Closing moment to present research results and communication products to relevant stakeholders. The meeting creates the space and opportunity to interact with each other to share integral knowledge. In preparation, students pitch their research in a 1-2 minute video. This is shared with stakeholders in advance so they can decide which tables they want to join.

Setup	Multiple roundtable discussions in small groups, in The Hague Southwest
Date/time	July 3 <sup>rd</sup> , 2025, 10:00-17:00
Location	T.b.d.
Deadlines	<ul style="list-style-type: none"> <li>- Submit a video pitch (max. 2 min) two weeks in advance</li> <li>- Deliver communication product two weeks in advance</li> </ul>

## Timeline 2024 - 2025

In the table below you will find an overview of all important dates, deadlines and moments of the Thesis Hub The Hague Southwest. **Note these accurately in your calendar.** The activities in bold in the first table are mandatory. The dates and locations below are subject to change. If applicable, you will receive an email with the new dates or location.

Table 1: dates of the mandatory components

What	Day	Time	Where
<b>Ethics Workshop</b>	February 18 <sup>th</sup> , 2025	10:00-13:00	T.b.d.
<b>Kick-off meeting</b>	March 31 <sup>st</sup> , 2025	10:00-17:00	T.b.d.
<b>Method Café Workshop</b>	February 26 <sup>th</sup> , 2025	9:00-12:00	T.b.d.
<b>Workshop Science Communication</b>	May 19 <sup>th</sup> , 2025	10:00-13:00	T.b.d.
<b>Video pitch deadline</b>	June 16 <sup>th</sup> , 2025	23:59 PM	Mail to scriptiewerkplaats@fgga.leidenuniv.nl
<b>Communication product</b>	June 23 <sup>rd</sup> , 2025	23:59 PM	Mail to scriptiewerkplaats@fgga.leidenuniv.nl
<b>Final Meeting</b>	July 3 <sup>rd</sup> , 2025	10:00-17:00	T.b.d.

## Voluntary parts

The thesis hub has scheduled several meetings (physical and online) each semester for students to spar with the coordinator about their research and progress. In addition, it is a structural

opportunity to meet with other master's students from



other disciplines to exchange thoughts and reflect on your research process. The premise is to hold the meetings physically in The Hague Southwest, so that students experience the context of the neighborhood.

Registration deadline: at least one business day in advance

Table 2: dates of the non-binding meetings.

Date	Time	Where
March 12 <sup>th</sup> , 2025	10:00-11:30	Wijnhaven, Turfmarkt 99
March 25 <sup>th</sup> , 2025	13:30-15:00	Pand H, Jan Luykenlaan 29
April 10 <sup>th</sup> , 2025	13:00-14:30	Online
April 21 <sup>st</sup> , 2025	13:00-14:30	Pand H, Jan Luykenlaan 29
May 6 <sup>th</sup> , 2025	10:00-11:30	Online
May 19 <sup>th</sup> , 2025	13:30-15:00	Wijnhaven, Turfmarkt 99
June 5 <sup>th</sup> , 2025	14:00-15:30	Pand H, Jan Luykenlaan 29
June 17 <sup>th</sup> , 2025	10:00-11:30	Online

## Pandje H - with Heart and Head in Moerwijk

Since October 2022, The Hague Southwest Thesis Hub has a physical shared location in Moerwijk (Address: Jan Luykenlaan 29, 2533 JK The Hague). This is a temporary location used by The Hague University of Applied Sciences, neighborhood professionals and residents. Some meetings are organized in Pandje H, so that we are visible and present in the research area. The shared location has made us a reliable partner in the neighborhood.

Teachers and students may use the space free of charge for, for example, conducting interviews, focus groups, workshops or something similar. Of course, you can also use the location as a workplace when you visit The Hague Southwest. Would you like to use the location? Please contact the student assistant or coordinator for practical matters such as access to the premises.



## Practical challenges

### Municipality of The Hague | Policy staff

#### Urban Development Department - Urban Planning and Housing

- Place-making: How do you make place-making measurable? What value creation is needed around place-making?
- Project Interim: In the context of temporality, how do you ensure practical and well-functioning dual use of certain locations such as sports canteens, sports fields, et cetera?
- Meeting Places: What is needed in built and public spaces for residents to meet? Including elements of chance, long-term encounters and economic aspects.

#### Urban Development Department - Economy

- What is the usefulness, need and impact of adjusted rents for start-ups, and when it makes sense what tools can be used for this purpose?
- Issues surrounding a healthy division of living/working in The Hague Southwest.

#### Department of Education, Culture and Science

The cooperation between parent and school in The Hague Southwest is at odds here and there (read; this plays out more widely than in SW, but precisely in this type of neighborhood this is necessary to give children more opportunities). School indicates that parents are insufficiently involved and children enter school insufficiently equipped. Command of the Dutch language, behavior, but also a breakfast in the belly and interest in the home environment are issues for participation. Parents, on the other hand, feel inadequately heard by the school. What has not helped in this is that parents have not been allowed into the school for the past two years due to corona perils and a digital communication that is not obvious to everyone. In order to offer children real opportunities at school, it is important that school and parents (can) work together.

- How can the municipality of The Hague help improve cooperation between parents (parent participation) and schools; what hurdles must be removed for this to happen? What is needed for this?

## Directorate of Security / District Management

- What role do young people's social networks play on whether or not they engage in criminal behavior?
- Street harassment, what underlies it? Why do (especially) boys and men feel this way about girls and women? Are they aware of the impact? What happens to these men the moment they have closed the door of their house and are on the street with their friends.
- Energy Transition: How inclusive is the energy transition, and to what extent does the control lie with the residents themselves?

## Service Participation

When the Environment Act comes into force, participation will be made mandatory by law. Because participation is customized, the law does not prescribe how participation should take place. The municipality itself is investigating how to organize this properly. What would help is the perspective of  
among other things, citizens and their expectations.

- What would be interesting for the municipality is what do residents want to participate in when it comes to the Environment Act. And what are their expectations of participation in this regard? In other words, under what conditions/requirements/wishes do residents think participation is best. *Example: What do they expect from the information feedback after participation? A long and extensive report with all the considerations or a compact story with the outcome (or something else).*
- A follow-up question: Does it make sense for residents to participate if the municipality could not meet expectations? Will residents then want to put time into it? With the obligation of participation by law, residents must also participate. Under the Environment Act, participation is not optional. Do residents also feel this responsibility?

## Department of Social Affairs and Employment

- Within SSW, we are very concerned with neighborhood-oriented services and presence in the neighborhood. We want to be approachable and accessible to the resident, especially when it comes to vulnerable people. But does wanting to be accessible mean that we have to be neighborhood-oriented? And to what extent is neighborhood-oriented work actually effective?

## The Hague Southwest | Projects & Residents

### The Hague Southwest

The government's legal duty is to motivate residents to participate in society. However, some people cannot participate in society. There remains a group not well served, unable to participate.

- What do social welfare professionals in Southwest think about this? Does this group really exist? How large is this group? What are the characteristics? How do we deal with this group? What kind of facilities do you need ([SchuldenLab070](#))?
- In what ways can youth work better understand the impact of the work, increase outreach and support? ([Youth workers](#))

### Housing associations (Staedion/Haagwonen):

- How can new (clustered) housing concepts in social housing contribute to livability? We see social cohesion as part of livability.
- How can courtyard gardens contribute to neighborhood livability?
- How does the housing of care target groups and status holders affect livability (including, among other things, social cohesion) in the neighborhood?
- How do we bridge the temporality (around all the renovation and restructuring projects) in The Hague Southwest in the context of livability so that we design for the future but make a positive contribution in the present? ([DesignArmed](#))

### Moerwijk

- To what extent do extracurricular activities contribute to the development/livability of children? And do the costs (financial/time/etc.) outweigh the benefits (improvement) in this regard? ([Neighborhood school](#))
- Why are the partnerships of the parties in Moerwijk difficult to coordinate? And what is needed for this to succeed ([Neighborhood School](#))?
- What role can/should a school play in bringing about the future prospects of youth? And what is needed to achieve this ([Neighborhood School](#))?
- In what ways can the Moerwijk Neighborhood School, in cooperation with other stakeholders in the neighborhood, improve safety in and around school? ([Neighborhood School](#))

- What is parent participation? How is it interpreted by parents in Moerwijk? To what extent does the integration process support parents of non-western descent the expectations schools and government have of parent participation in the Netherlands?
- How can the female perspective (and girls) be integrated into the policy process when we talk about outdoor space design and issues around safety? Where are the opportunities and challenges?

## Morning

- How do we get parents more involved in their children's education at Tamar School? (issue: parent participation) ([Tamar School](#))
- How can you (the elementary school) support children/youth in broadening their study/future perspective? What is the role/responsibility of the elementary school here ([Tamar School](#))?
- What are the necessary preconditions for the successful placement of a havo/vwo school in The Hague Southwest? Think of building, location, facilities, politics, policy, et cetera, but also what is needed from elementary schools to promote progression to a havo/vwo school in The Hague Southwest ([Tamarschool](#)).

## Bouwlust/Vrederust

- What themes emerge when we talk about connections between people and meaning/giving: how do residents of Bouwlust/Vrederust identify with these concepts? What is a resident of Bouwlust/Vrederust proud of? How do you connect people at a time like this? - *A research method that would be interesting is story-telling* ([Heleen - STEK](#)).
- To what extent does media affect the future prospects of youth? ([Southwest College](#))
- What needs are there in (neighborhood) around doing light work with social value, without displacing regular labor? It should bring social value to the neighborhood, but should not displace it. Examples of tasks currently performed: Cooking fresh soup and delivering it to lonely (elderly) neighborhood residents, surveying the neighborhood and reporting bulky garbage on the street, helping neighborhood residents with simple chores ([Instapeconomy](#)).
- To what extent does giving a fixed amount of money as a reward provide other added value to Instapeconomy participant(s)? ([Instapeconomy](#))

- Which locations in The Hague Southwest are suitable for neighborhood businesses (meeting place, spaces for activities, garden to work in, outdoor part for activities, meeting rooms, etc.)? And what preconditions make these spaces suitable for the activities in question? (Instapeconomy)
- To what extent does cross-pollination between social activities and/or Dutch as a language of communication reduce group formation based on shared language or culture within an informal organization such as Allekanten? What preconditions are needed to effectively counteract group formation/exclusion within social activities? (Method) (Allekanten)
- To what extent can current projects at Allekanten be sustained sustainably and independently by residents in the neighborhood so that the accumulated social capital (network) is not lost upon losing any financial support. What preconditions must be present for the projects to be sustainably sustained by residents? To what extent is support needed from external parties? (All sides)



## Privacy and data sharing



Participation in the Thesis Hub The Hague Southwest means that your data will be shared with third parties. The basis for this is public interest. The sharing of personal data (name and e-mail) between students of the different universities (Leiden, Delft and Rotterdam) is part of the thesis hub to promote integral cooperation between students. Below is explained with whom, why and what is shared. Other information about what happens to your data as a student can be found in the general student privacy statement on your own university's website.

[University of Leiden](#)

[TU Delft](#)

[Erasmus University](#)

### Exchange of personal data of contacts by students

Since in the final meeting the research findings and concrete policy recommendations will be presented by several students, we think it is important that students allow their participants and contacts to participate in the meeting. However, it is important to inform the relevant person that their details will be shared with the thesis hub coordinator so that they can provide an invitation.



It is also important to be aware that if a person chooses to participate in the meeting, their possible anonymity cannot (anymore) be assured in your research. It is therefore **very important** to inform your participant/contact person beforehand and to ask explicit permission. We have prepared a sample text that you can use.

**Sample text:**

*I would like to inform you that at the end of my research a final meeting will take place at which the research results and policy recommendations will be shared by students connected to the The Hague Southwest Thesis Hub. Various staff from the universities and the municipality of The Hague will be present then, but also professionals and key figures in The Hague Southwest will be invited. If you would like, you are also more than welcome to attend the final meeting. **Important** to know is that I will share your contact information (name and email) with the coordinator of the thesis hub, Mandy Koenraads, so she can invite you to the meeting in due time. In doing so, I would also like to emphasize that through your presence it is possible that my research may be linked to by attendees - this is not necessarily the case, but I cannot say for sure. .*

*Would you like to be invited to the final meeting of my research? If yes, by placing your signature you give permission to share your contact information with the coordinator of the thesis hub The Hague Southwest. After the final meeting, your data will be removed.*

## Exchange of personal data within the thesis hub The Hague Southwest

### Other students

Purpose: The thesis workshop is an educational platform where the starting point is interdisciplinary cooperation in the field of research. Therefore, it is desirable to connect master's students from the various universities. This way they can also communicate with each other outside the coordinator.

Exchange data: name, field of study, university, student email and research question linked to chosen challenge.

### Municipality The Hague

Purpose: the thesis hub is a partnership between the Municipality of The Hague and the LDE Centre Governance of Migration and Diversity. As a partner, we would like to share an overview of which students are participating in the thesis hub and what topics they are working on during the academic year.

Exchange data: name, master's program, university, student email and research question linked to chosen challenge.

### Contact from the chosen challenge

Purpose: to promote an integral collaboration between the contact person in The Hague Southwest and the master student. By facilitating a joint contact moment between the external contact person, student and supervisor, an effort is made to promote the involvement of all parties.

Exchange data: name, master's program, university, student email and research question linked to chosen challenge.

### Data sharing on LDE GMD website

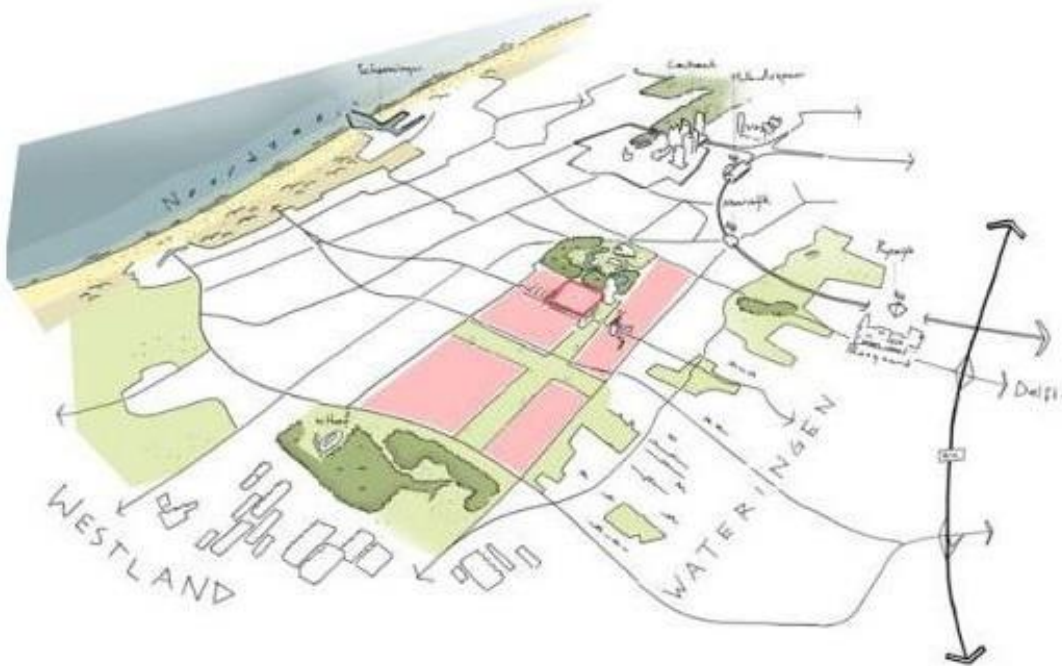
Purpose: To be transparent about the ongoing and completed research that master's students are working on. Furthermore, the universities attach great importance to making the output of the thesis hub accessible to all. For this purpose, they have chosen to collect all output on a publicly accessible website. When you as a student

consent, your entire thesis will be uploaded to the LDE GMD website. The communication product is a required component and will be published on the website.

Mention ongoing research: master's program, university, research question linked to chosen challenge.

Mention completed research: university, master's thesis, communication product

## Background information



### Why is the Thesis Hub The Hague Southwest needed?

The municipality of The Hague faces a number of complex social issues in The Hague Southwest. The four neighborhoods (Bouwlust, Vrederust, Morgenstond and Moerwijk) comprise approx. 70.000 residents - similar to the city of Gouda - who struggle with multiple socioeconomic issues such as poverty, debt, unemployment, subsistence, polarization and health problems. To address the wicked problems in The Hague Southwest, the Regiodeal was formulated in 2019 to invest heavily in four neighborhoods in the coming years. The issues in The Hague Southwest need an interdisciplinary approach, where it is necessary to strengthen the bridge between policy, research, education and practice. The municipality of The Hague asked the LDE Center Governance of Migration and Diversity (GMD) to become a partner to build a relevant bridge between research, policy and practice. Meanwhile, we have our own location in The Hague Southwest (Jan Luykenlaan 29, Moerwijk). This location is shared with the Haagse Hogeschool and neighborhood initiatives in Moerwijk.

### Partnership between universities

Leiden-Delft-ErasmusUniversities (LDE) is the partnership of the three universities in those cities, including their UMCs. The LDE Center for Governance of Migration and Diversity takes a multidisciplinary look at governance and policy issues in four South Holland cities namely Leiden, The Hague, Rotterdam and Delft. Each university is included in this

collaboration deployed from its strengths and expertise. By linking various thesis research by master's students to relevant practice-oriented challenges around The Hague Southwest, the bridge between scientific knowledge and practice-oriented insights is strengthened. In this way, the thesis hub seeks to make a positive contribution to future-oriented social, administrative and policy developments in The Hague Southwest.

## Sources for more context information on Hague Southwest

### Reports:

- Final report of the [Regiodeal \(2019-2023\)](#)
- Implementation agenda [National Program Hague Southwest \(NPZW\)](#).
- Implementation program [Prevention with Authority](#)
- Handbook of [Clout in the Neighborhood](#)

### Websites about The Hague Southwest

- ['Southwest at its best'](#)
- [District agendas of the neighborhood\(s\)](#).
- [Structural vision/public space in The Hague Southwest](#)

### Videos for context:

- Omroep West makes documentary on 'the people of The Hague Southwest'  
[Episode 1](#).
- Story night Moerwijk-East: ['We are going to work together'](#)- this gives a small glimpse into the experiences of residents
- City Talk: [Hague Southwest is ready for new Neighborhood Approach](#)
- City talk: [More green quality and densification in The Hague Southwest](#)
- City Talk: [Transportation between region and front door: catalyst for a stronger Hague Southwest](#)

### Get started yourself at the following websites:

- Access to council documents and policies via [website](#)
- [Open data platform](#)
- [Assistance Monitor](#)
- [Poverty Monitor](#)
- [Livability Circle](#)
- [Healthy&Happy The Hague](#)
- [Platform CITY](#)

### Relevant news articles about The Hague Southwest

- National [Livability and Security Program](#)

- Neighborhood justice in The Hague Southwest
- Coalition Housing Education Work helps residents Hague Southwest get to work

## Agreement Duty of Effort

*I [NAME STUDENT] ..... am happy to join the educational program of the Thesis Hub The Hague Southwest, and am thereby aware of the attendance requirement of the six mandatory components\* and dates. While I cannot guarantee a particular outcome, I am committed to keeping the coordinator well informed of my progress and any barriers during the entire Thesis Workshop Hague Southwest process.*

*In a respectful manner, I enter the context of The Hague Southwest as a student and do my utmost to leave this research area better behind. My fellow students can expect an active attitude from me during the meetings as I expect the same from them.*

*I give permission for my communication product to be communicated to third parties on the Thesis Workshop The Hague Southwest website.*

*Date*

*Location*

.....

.....

*Signature*

.....